

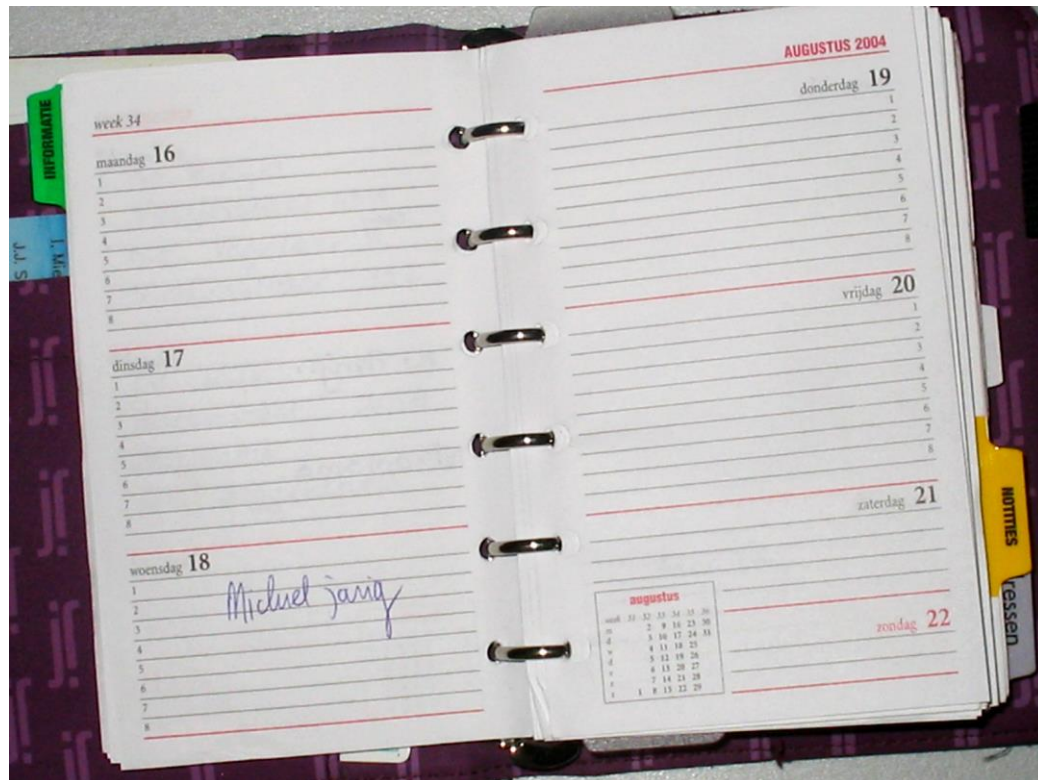
# City Manager's Report

---

Presented by Mario Juarez-Infante, PE, City Manager  
03.17.2026



# Summary



- Monte Cristo Blvd. Phase II  
*Safety Improvements*
- 2026 Congressional Director Spending  
*Community Project Funding Request*
- 2026 Local Government Road Fund  
*Municipal Arterial Program Request*
- Rio Grande Trail Phase II  
*Construction & Construction Management*

# Monte Cristo Blvd. Phase II *Safety Improvements*

---



## Quick Facts

- On-call Request for Quotes.
- Budget: \$200,000.
- 60% Plans and Estimate: March 27.
- 90% Plans and Estimate: April 17.
- PS&E: April 30.
- Notice to Proceed: May 18.
- Substantial Completion: July 31.
- Final Acceptance: August 14.



# 2026 Congressional Director Spending *Community Project Funding Request*

---



# Community Project Funding Request



2026 |  SUNLAND PARK

## City of Sunland Park

### Mayor

*Javier Perea*

### City Council

*Mili Sandoval*

*Armando Mata*

*Bertha Salmon*

*Alberto Jaramillo*

*Maria Burciaga*


*Raul Telles*



THANK YOU


Thank you for your funding consideration for these very much needed projects in the City of Sunland Park.



 Email: [Mario.Juarez-Infante@sunlandpark-nm.gov](mailto:Mario.Juarez-Infante@sunlandpark-nm.gov)

 Tel: (575) 589-7565

 Address: 1000 McNutt Rd., Ste. A  
Sunland Park, NM 88063

 Website: [sunlandpark-nm.gov](http://sunlandpark-nm.gov)

## Community Project Funding Requests



01 | Sunland Park Urgent Care Center

02 | North Wastewater Treatment Plant Expansion

# Community Project Funding Request



## 01 | Sunland Park Urgent Care Center

### PROJECT OVERVIEW

**Goal:** Expand access to urgent care, imaging, and primary care for Sunland Park and surrounding border communities.  
**Scope:** Construct a new medical complex on ~3 acres along NM 273 / Sunland Park Drive, with access to I-10, Santa Teresa, and nearby communities.  
**Primary Provider:** Memorial Medical Center (MMC) will operate the facility.

### PROJECT NEED

- Residents travel ~1 hour to Las Cruces for New Mexico healthcare services.
- Only local provider: La Clínica de Familia.
- Regional population: 90,000+ within 15 minutes.
- Consequences of limited access:
  - Higher mortality rates
  - Chronic disease prevalence
  - Poor maternal/neonatal outcomes
  - Increased ER reliance



### PROJECT COMPONENTS

- Urgent Care Center: urgent care, primary care, and imaging.
- City retains land/facility ownership, leases to qualified provider at market rate.
- Land-use plan accommodates mixed-use development, housing, and retail alongside the facility.
- Reduces reliance on distant ERs; improves timely access to care.



### COMMUNITY IMPACT

- Expands access to urgent care, imaging, and primary care.
- Improves health outcomes for families, seniors, and workers.
- Reduces travel burdens.
- Creates local employment opportunities.
- Strengthens healthcare infrastructure in Sunland Park and surrounding border communities.

### FUNDING

- Secured: \$1,000,000 (Southwest Border Commission)
- Requested: \$4,800,000 (construction and construction management)

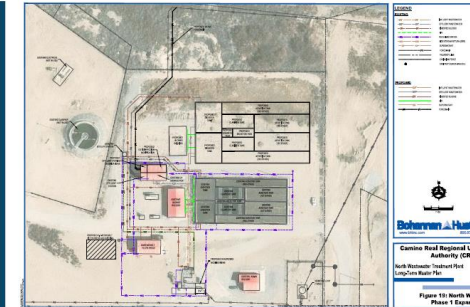
## 02 | North Wastewater Treatment Plant Expansion

### PROJECT OVERVIEW

**Goal:** Expand the North Wastewater Treatment Plant to meet growing wastewater treatment demands and support long-term community growth in southern Doña Ana County.  
**Scope:** Construction and construction management services to increase treatment capacity, modernize infrastructure, and improve system reliability.  
**Service Area:** Sunland Park and nearby Colonias communities along the U.S.–Mexico border.

### PROJECT NEED

- The existing facility is approaching operational capacity due to continued population growth and regional development.
- Limited wastewater infrastructure creates potential risk of system overloading and regulatory non-compliance.
- Expansion is necessary to support future residential and economic development.



### PROJECT COMPONENTS

- Increase treatment plant capacity to handle projected wastewater flows.
- Modernize aging infrastructure and improve system reliability and resiliency.
- Support infrastructure needs for nearby Colonias communities facing aging systems and limited resources.
- Reduce risk of system overloading and maintain compliance with state and federal water quality regulations.

### COMMUNITY IMPACT

- Provides reliable wastewater treatment for existing residents and businesses.
- Accommodates future growth in Sunland Park and surrounding communities.
- Protects regional water resources and improves environmental outcomes.
- Supports underserved Colonias communities and strengthens regional infrastructure.

### FUNDING

- Requested: \$5,000,000 (construction and construction management)
- Purpose: Complete facility expansion and modernization.




# 2026 Local Government Road Fund *Municipal Arterial Program Request*

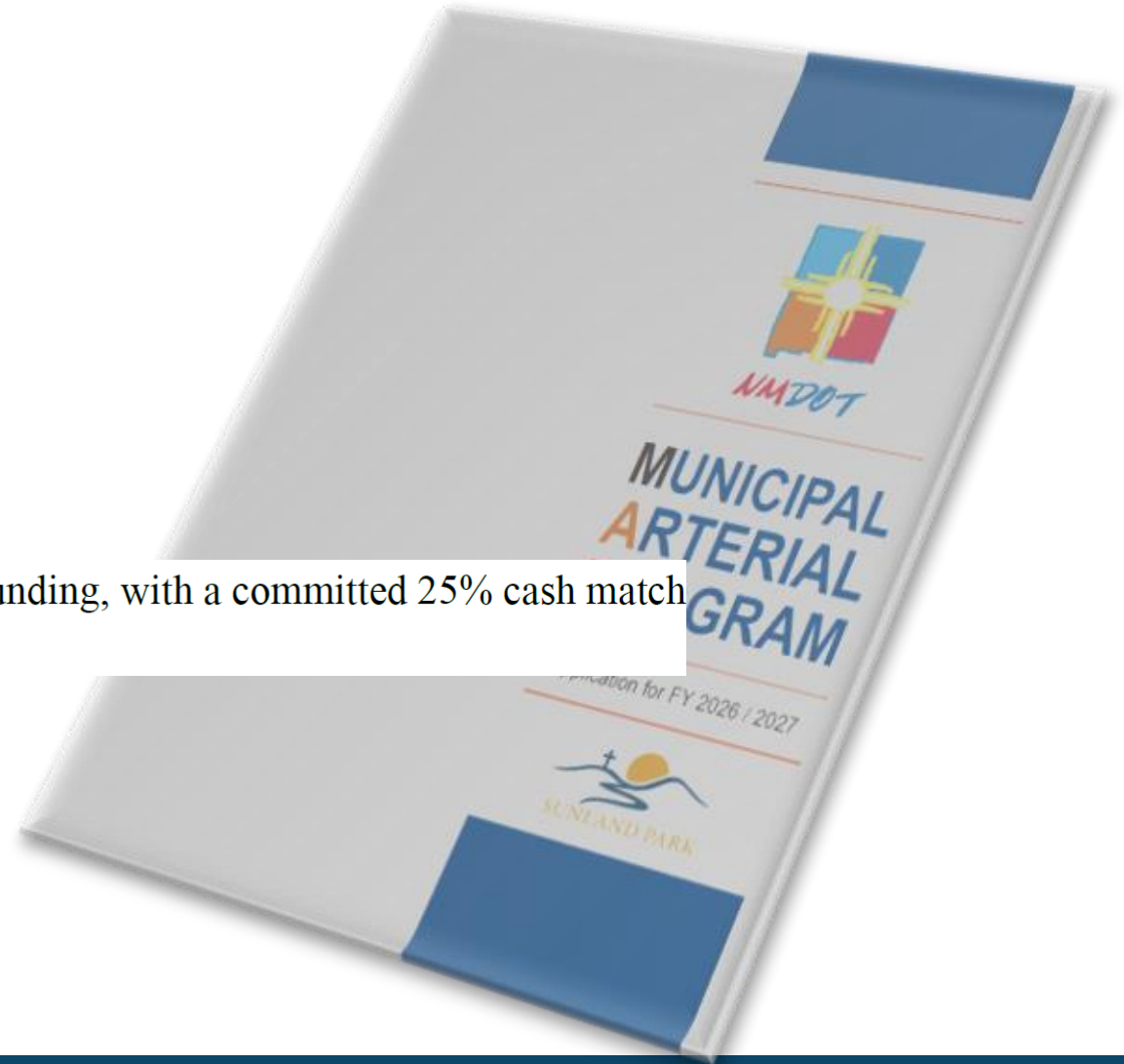
---



# Funding Request

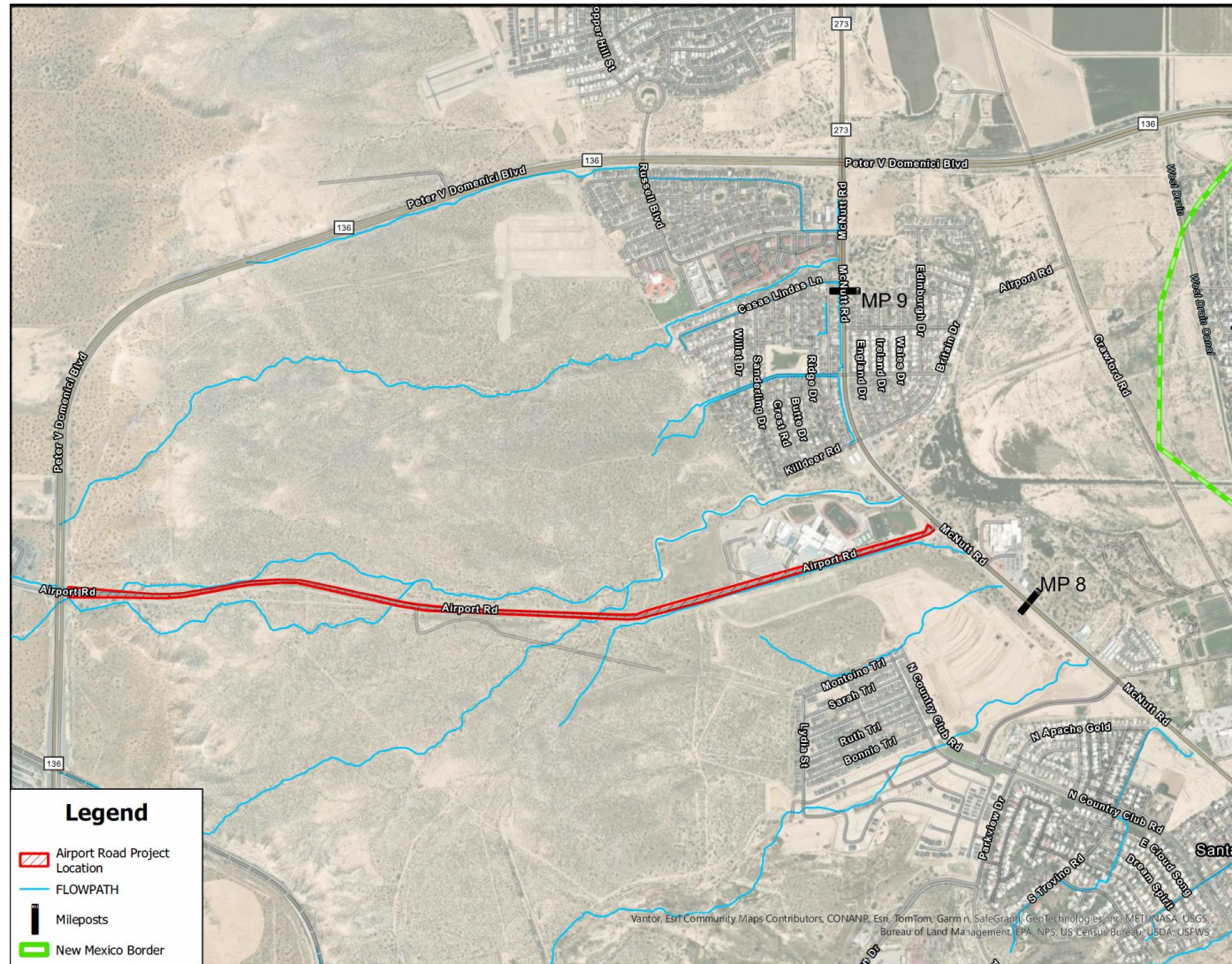


	<b>CITY OF SUNLAND PARK</b> 1000 MCNUTT RD, SUITE "G" SUNLAND PARK, NM 88063 PH. (575) 589-1268   FAX (575) 589-748	
<p>March 13, 2026</p> <p>Charisse Montoya, LGRF Coordinator NM Department of Transportation 1120 Cerrillos Road P.O. Box 1149 Santa Fe, New Mexico 87504-1149</p> <p><b>Re: Letter of Intent for the City of Sunland Park Fiscal Year 2027 Local Government Road Fund Municipal Arterial Program Application Airport Road Improvements NM 273 to NM 136</b></p> <p>Dear Ms. Montoya,</p> <p>The City of Sunland Park appreciates the opportunity to submit this year's Local Government Road Fund (LGRF) Municipal Arterial Program (MAP) application. The proposed project includes design services for roadway improvements on Airport Road from NM 273 to NM 136. Roadway improvements include full-depth pavement</p>		
<p>The project area was selected based on the City's Infrastructure Capital Improvement Plan (ICIP). The City certifies that the proposed improvements are on a roadway connecting to state highway routes, essential for public safety, convenience, and accessibility.</p> <p>Please contact my office if you require any additional information or documentation.</p> <p>Sincerely,</p> <p> Mario Juarez-Infante, PE City Manager</p> <p>cc: Sean Sandoval</p>		



For the MAP request, the City is seeking \$460,889.40 (75%) in state funding, with a committed 25% cash match of \$153,629.80 for a total MAP request of \$614,519.20.

# Project Location



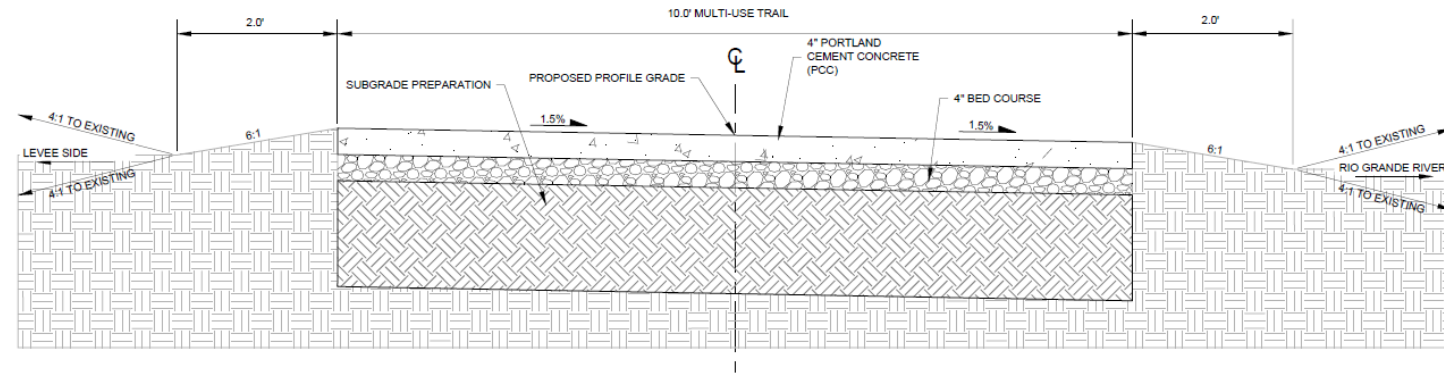
# Rio Grande Trail Phase II *Construction & Construction Management*

---



## Quick Facts

- Invitation to Bid procurement
- Base Bid + Additive Alternate is \$1,097,785 (excluding NMGRT)
- Awarded to Highland Enterprises, Inc.
- Estimated Notice to Proceed: March 31.
- Estimated Substantial Completion: July 31.
- Estimated Final Acceptance: August 14.



(A1) RIO GRANDE TRAIL PHASE 3 - PROPOSED TYPICAL SECTION  
STA: 10+00.00 TO STA: 64+73.08

# Project Location





Thank you