

City Manager's Report

Presented by Mario Juarez-Infante, PE, City Manager
05.21.2025



Report Summary



1. Monte Cristo Blvd./Gila Drive Bid Opening Results
2. Medical Facility (i.e. Urgent Care) Update
3. Enforcement of Cannabis in Public Parks
4. TxDOT Road Detours

Monte Cristo Blvd./Gila Drive Bid Opening Results



- *Phase I of Safety Improvements along Riverside Elementary School*
- *Four (4) bidders, but only three (3) responsive*
- *Responsive Low Bid is Nine Degrees*
- *Project scheduled to start in June and completed before school starts*

WE ARE THE GATEWAY TO THE LAND OF ENCHANTMENT

The contractors submitted their RFQ proposals for the above-referenced project via email, and both Claudia Carrillo and I received them on May 8, 2025, at 12:00 PM local time.

A total of four (4) proposals were received, as detailed in the table below. However, one proposal was deemed non-responsive due to non-compliance with the requested requirements.

Contractor	Base RFQ Amount Excluding NMGR	Base RFQ Amount Including NMGR	Add Alt Amount Excluding NMGR	Add Alt Amount Including NMGR
Gil JR Home Construction (non-responsive)	\$343,420.25	\$371,546.37	\$21,202.50	\$22,938.98
Jaynes Corporation	\$528,847.55	\$572,160.16	\$67,889.07	\$73,449.18
Highland Enterprises, INC	\$553,404.00	\$598,727.79	\$23,762.50	\$25,708.65
Nine Degrees Construction, LLC	\$411,405.00	\$445,099.07	\$75,240.50	\$81,402.70

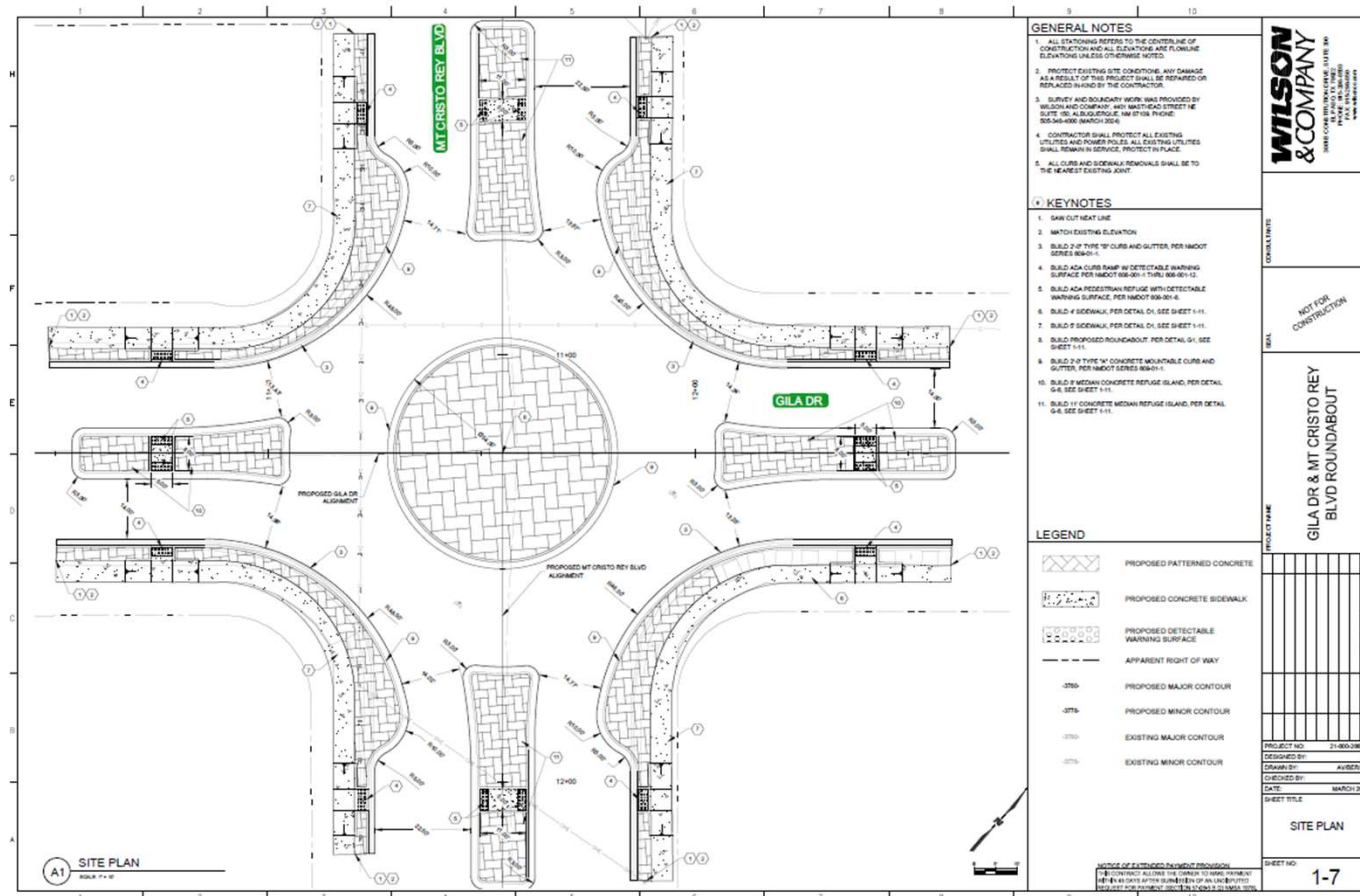
Responsive Proposals

The responsive proposals were submitted by:

- Jaynes Corporation
- Highland Enterprises, Inc.
- Nine Degrees Construction, LLC



- Project is out to bid
- Notice of Award will occur the week of June 2
- Estimated Completion Date is on or before August 15, 2025

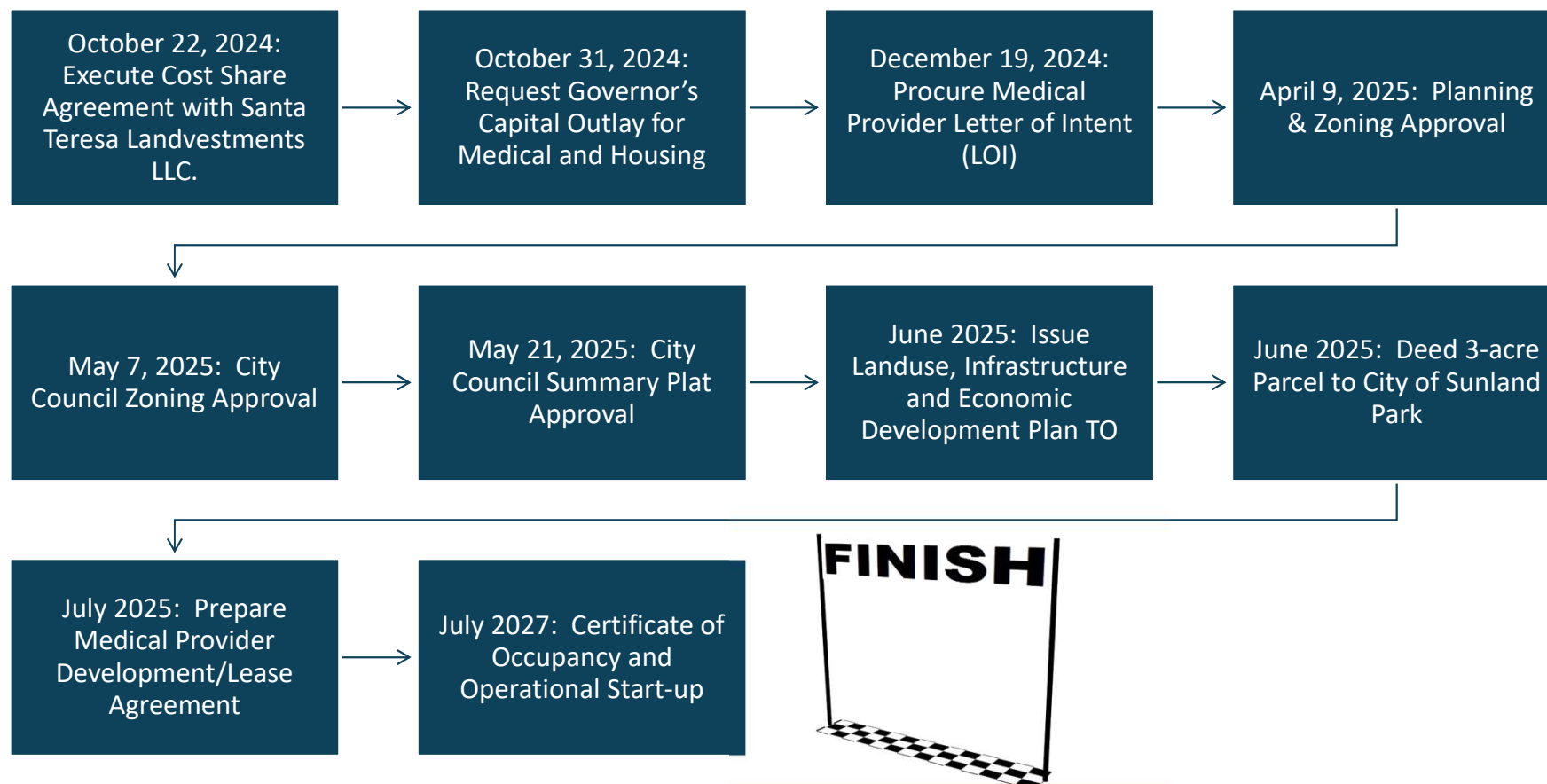


Medical Facility (i.e. Urgent Care) Update





Estimated Project Schedule



- *Zoning is approved*
- *Summary Subdivision for 3-acre parcel is complete*
- *Renderings are complete*
- *Draft Development Agreement is underway*



WE ARE THE GATEWAY TO THE LAND OF ENCHANTMENT



Renderings



WE ARE THE GATEWAY TO THE LAND OF ENCHANTMENT

Renderings



WE ARE THE GATEWAY TO THE LAND OF ENCHANTMENT

Enforcement of Cannabis in Public Parks



- *Public Works has ordered regulatory signage and post for erection in public parks*
- *San Gabriel and Elena Park have new posted signs*
- *PW is be posting on more public parks in the summer and fall, in-between daily maintenance and operation duties, as time permits*

WE ARE THE GATEWAY TO THE LAND OF ENCHANTMENT



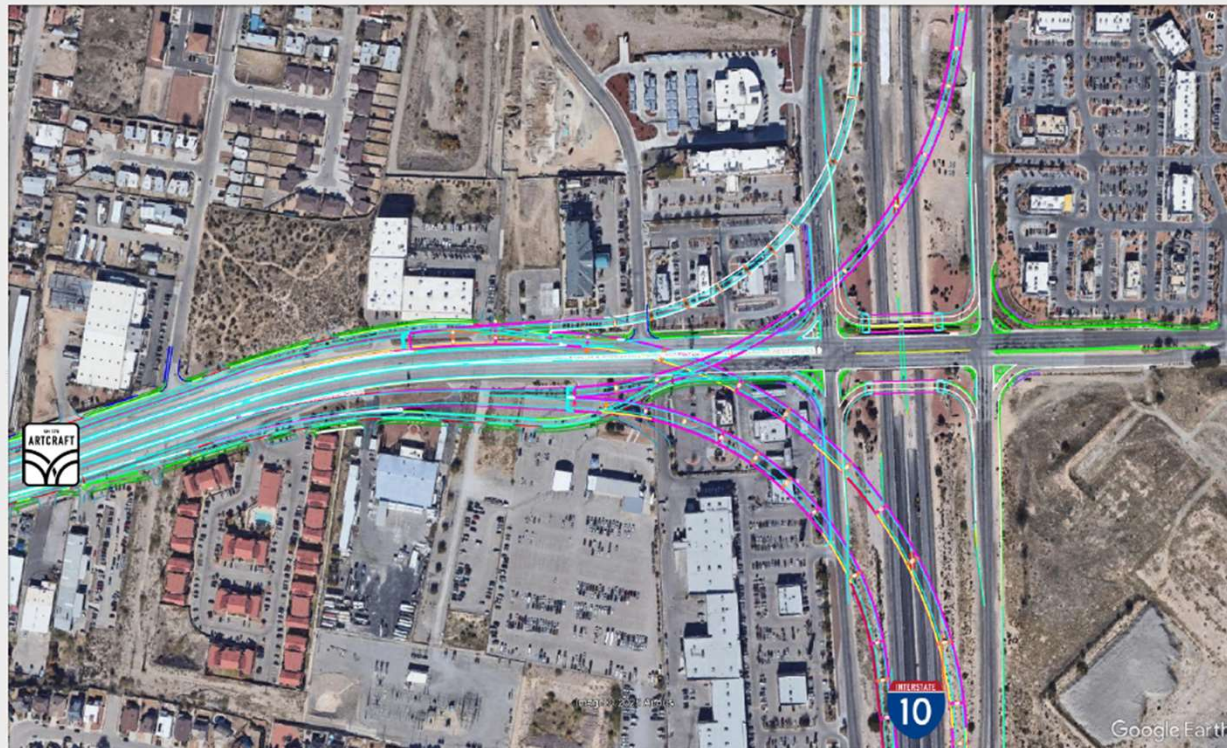
TxDOT Road Detours



Proposed Interchange Aerial View

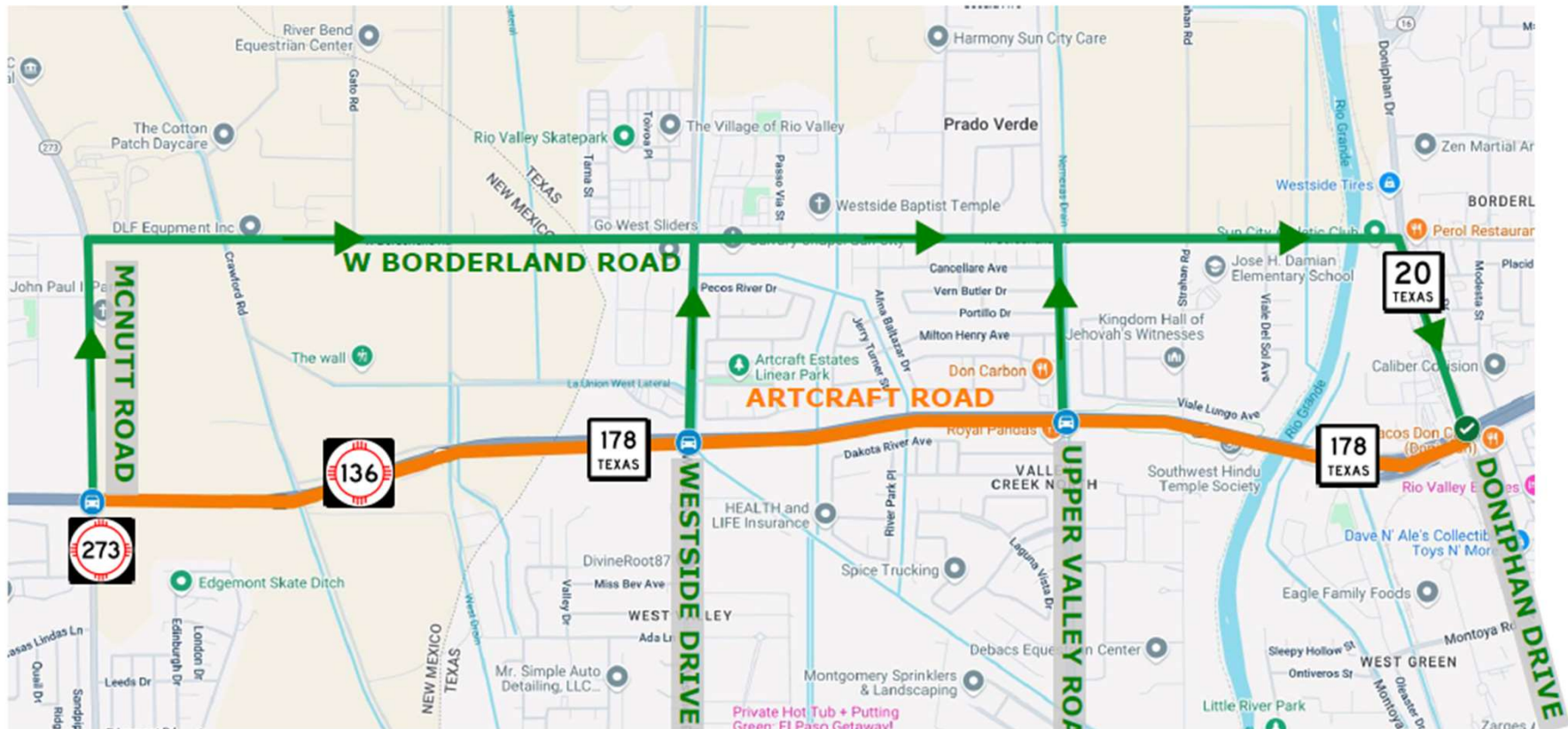


Artcraft Road – I-10 Direct Connectors



Note: Image is for illustration purposes only.

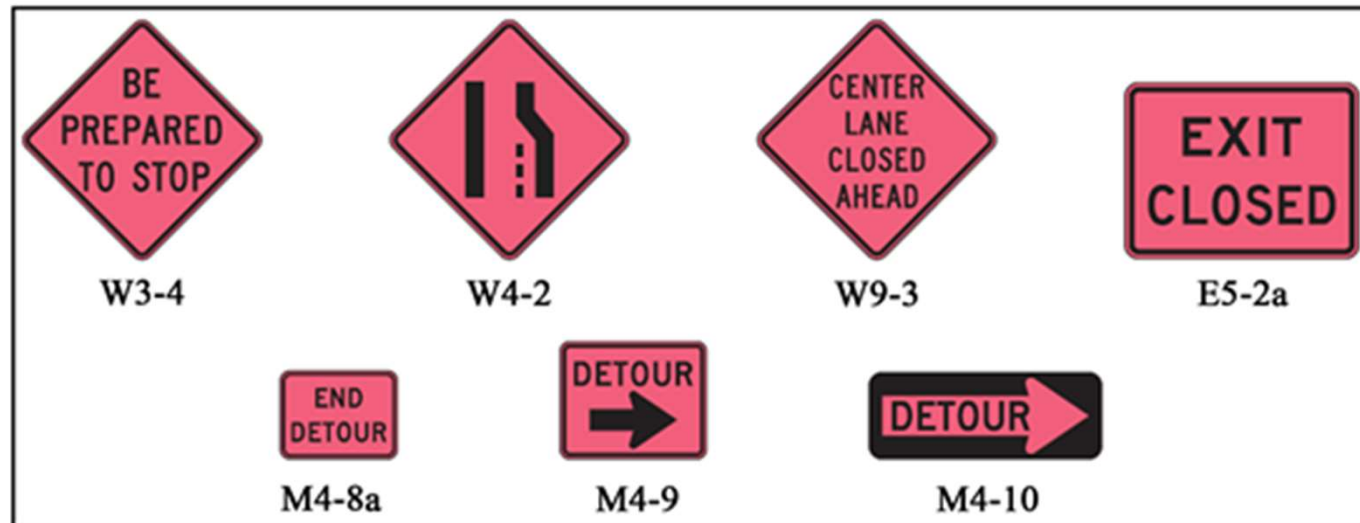
TxDOT Detour



WE ARE THE GATEWAY TO THE LAND OF ENCHANTMENT

- The closures **for next week are only overnight to remove barrier first on the eastbound lanes Monday night at 9 at Transmountain to Artcraft;** and the **second overnight Tuesday from Artcraft to Transmountain, same hours.** If you're out there late, please consider an alternate route.
- On the **Widening West 2** project, expect an **overnight closure of South Desert from Anthony to Vinton, forcing traffic onto the 10 until Vinton Thursday night from 9PM to 6AM.**
- **Artcraft will close the eastbound lanes overnight all this week 9PM-6AM between McNutt and Upper Valley,** detouring traffic to Borderland for a traffic switch. This is the biggest closure so far on this project, and there is a map attached for everyone to share. **Traffic signals** will be out overnight at some intersections, so please watch for and respect the cops who will be taking their place to help traffic along: Monday and Tuesday nights at Westside drive, Wednesday and Thursday nights at Upper Valley.
- We have been rebuilding the **ramps around Iron Medics** one at a time, closing them for about six weeks each, and now we are on Ramp 3 and for this we are also closing the overpass there. There is a graphic of that for you attached.

WE ARE THE GATEWAY TO THE LAND OF ENCHANTMENT





Thank you

WE ARE THE GATEWAY TO THE LAND OF ENCHANTMENT